

COMPETITIVENESS AND INNOVATION FRAMEWORK PROGRAMME

CIP-ICT-PSP-2013-7 Pilot Type B



WP3 – Service platform integration and deployment in
cloud infrastructure

D3.4.2: Data Fusion Tools

Deliverable Lead: NETCAD

Deliverable due date: 29/02/2016

Actual submission date: 29/02/2016

Version: 1.2

This project is partially funded under the ICT Policy Support Programme (ICT PSP) as part of the Competitiveness and Innovation Framework Programme by the European Commission under grant agreement no. 621074



Document Control Page

Title	D3.4.2: Data Fusion Tools
Creator	Ali Sümer (Netcad)
Description	This document introduces the second prototype of the Data Fusions Tools
Publisher	FOODIE Consortium
Contributors	
Creation date	25/03/2015
Type	Text
Language	en-GB
Rights	copyright "FOODIE Consortium"
Audience	<input type="checkbox"/> internal <input checked="" type="checkbox"/> public <input type="checkbox"/> restricted
Review status	<input type="checkbox"/> Draft <input type="checkbox"/> WP leader accepted <input type="checkbox"/> Technical Manager accepted <input checked="" type="checkbox"/> Coordinator accepted
Action requested	<input type="checkbox"/> to be revised by Partners <input type="checkbox"/> for approval by the WP leader <input type="checkbox"/> for approval by the Technical Committee <input type="checkbox"/> for approval by the Project Coordinator
Requested deadline	

STATEMENT FOR OPEN DOCUMENTS

(c) 2016 FOODIE Consortium

The *FOODIE* Consortium (<http://www.foodie-project.eu>) grants third parties the right to use and distribute all or parts of this document, provided that the *FOODIE* project and the document are properly referenced.

THIS DOCUMENT IS PROVIDED BY THE COPYRIGHT HOLDERS AND CONTRIBUTORS "AS IS" AND ANY EXPRESS OR IMPLIED WARRANTIES, INCLUDING, BUT NOT LIMITED TO, THE IMPLIED WARRANTIES OF MERCHANTABILITY AND FITNESS FOR A PARTICULAR PURPOSE ARE DISCLAIMED. EXCEPT WHAT SET FORTH BY MANDATORY PROVISIONS OF LAW IN NO EVENT SHALL THE COPYRIGHT OWNER OR CONTRIBUTORS BE LIABLE FOR ANY DIRECT, INDIRECT, INCIDENTAL, SPECIAL, EXEMPLARY, OR CONSEQUENTIAL DAMAGES (INCLUDING, BUT NOT LIMITED TO, PROCUREMENT OF SUBSTITUTE GOODS OR SERVICES; LOSS OF USE, DATA, OR PROFITS; OR BUSINESS INTERRUPTION) HOWEVER CAUSED AND ON ANY THEORY OF LIABILITY, WHETHER IN CONTRACT, STRICT LIABILITY, OR TORT (INCLUDING NEGLIGENCE OR OTHERWISE) ARISING IN ANY WAY OUT OF THE USE OF THIS DOCUMENT, EVEN IF ADVISED OF THE POSSIBILITY OF SUCH DAMAGE.

About the project

FOODIE project aims at creating a platform hub on the cloud where spatial and non-spatial data related to agricultural sector is available for agri-food stakeholders groups and interoperable. It will offer: an infrastructure for the building of an interacting and collaborative network; the integration of existing open datasets related to agriculture; data publication and data linking of external agriculture data sources, providing specific and high-value applications and services for the support of planning and decision-making processes.

FOODIE project is addressed to four basic groups of users: a) stakeholders from the agriculture sector as end-users of final applications, b) public sector for communication with farmers about taxation, subsidies and regulation, c) researchers for large scale experimentation on real data and d) ICT companies for the development of new applications for agriculture and food sector, mainly using implemented tools

FOODIE specifically works on three pilots:

- Pilot 1: Precision Viticulture (Spain) will focus on the appropriate management of the inherent variability of crops,
- Pilot 2: Open Data for Strategic and Tactical Planning (Czech Republic) will focus on improving future management of agricultural companies (farms) by introducing new tools and management methods,
- Pilot 3: Technology allows integration of logistics via service providers and farm management including traceability (Germany).

Contact information

Miguel Angel Esbri

Project Coordinator

Atos Spain, Madrid, Spain

E-mail: miguel.esbri@atos.net

URL: <http://www.foodie-project.eu>

Twitter: https://twitter.com/FOODIE_Project

Glossary

The glossary of terms used in this deliverable can be found in the public document “FOODIE_Glossary.pdf” available at: <http://www.foodie-project.eu>

Abbreviations and Acronyms

Abbreviation / Acronym	Description
API	Application Programming Interface
OGC	The Open Geospatial Consortium
WPS	Web Processing Service
GIS	Geographic Information System
REST	Representational State Transfer
SWG	The Standards Working Group
WCF	Windows Communication Foundation
WMS	Web Map Service
WFS	Web Feature Service
WFC	Web Feature Collection
WMTS	Web Map Tile Service
KML	Keyhole Markup Language
CAD	Computer-Aided Design
RS	Remote Sensing
NCC	Netcad Command
m-AHP	Modified Analytic Hierarchy Process

Table 1: Abbreviations and Acronyms

Executive Summary

This document introduces the second prototype of the data fusion tools, explaining the implementation architecture and capabilities in development.

Service overview

Data fusion tools combine data from different heterogeneous sources together to provide more efficient representation of data.

Data fusion tools aim to associate textual and/or spatial data in different structures from different sources in terms of geometry. Additionally process of data from multiple image sources is achieved by Data fusion services.

Implementation

OGC WPS

Data fusion capabilities are served by an OGC WPS standard [1] implementation. WPS implementation is updated for compliance with OGC WPS 2.0 standard [2]. Asynchronous processing ability is implemented based on OGC WPS 2.0 standards.

Data fusion WPS provides:

- Listing available data fusion processes.
- Getting detailed information about data fusion processes, including detailed description of inputs and outputs.
- Running data fusion processes
- Status information of running processes.

Data fusion WPS is enhanced to work with

Geoprocessing Service: Since FOODIE APIs are determined to be developed in RESTful Paradigm [4], related open standards has been studied. Although Restful API implementations are not yet standardized by OGC, implementation is based on documentation provided by GeoServices REST SWG. This service is designed as a wrapper service which is integrated to the WPS implemented before.

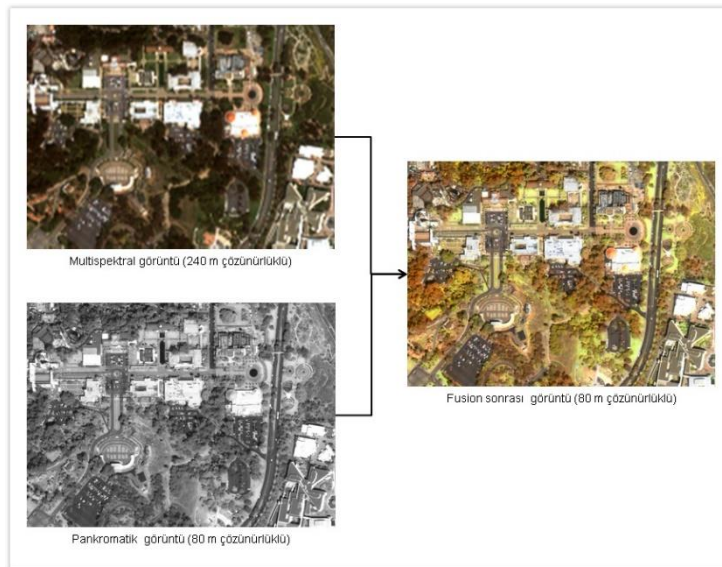
Architecture

Netcad WPS implementation is built using several NETCAD [3] suite applications as building blocks:

Geoprocessing Service: Geoprocessing Service is a web service implemented for FOODIE on WCF technology. Geoprocessing service is integrated with WPS implementation and runs on the same web server.

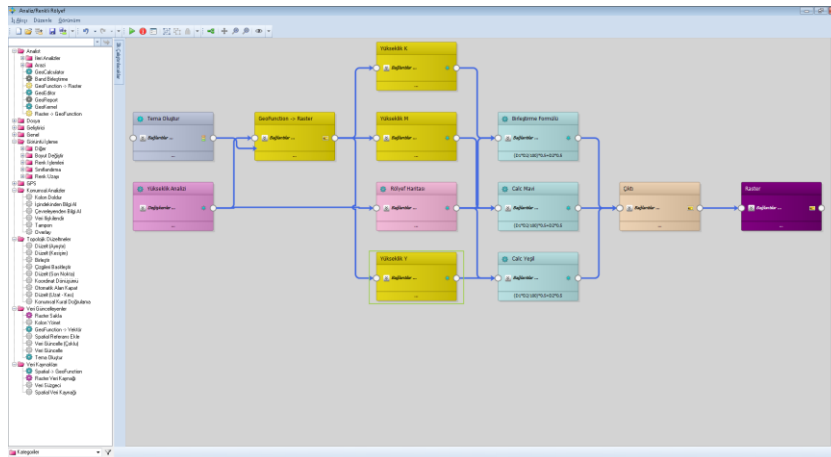
Netcad GIS: Netcad GIS is an advanced desktop application designed to be used by Engineering and GIS users especially working with maps.

Netcad Analysis Module: Netcad Analysis module is the Netcad application in which basic and advanced surface analyses, raster (image) analyses, basic and advanced spatial analyses can be performed. GIS, CAD, RS analyses are performed together interactively.



1-Analysis of multiple image sources

Netcad Architect: Netcad Architect is an application used for creating, managing and editing workflow with the help of operators. You can design your own operations with workflows and you can get outputs in a single step.



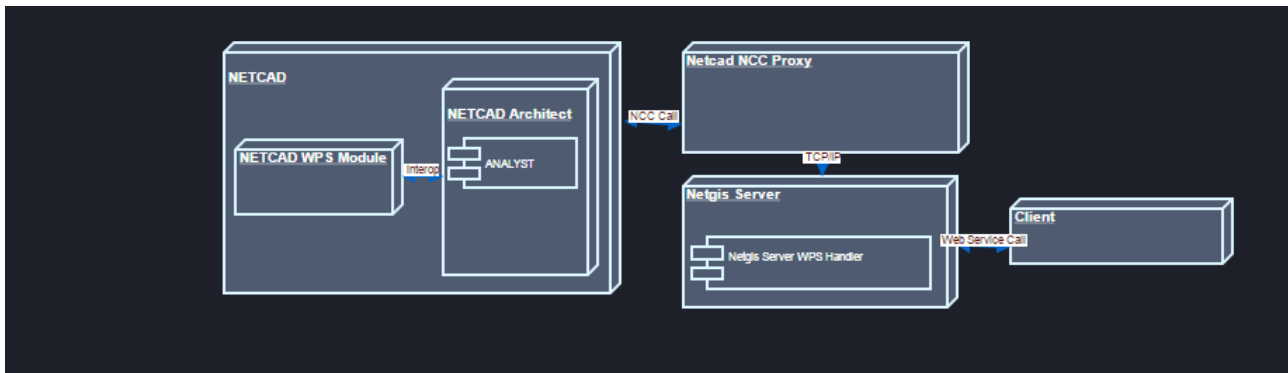
2- Workflow development with Netcad Architect

Netcad WPS Module: Netcad WPS Module is an application that accepts requests of WPS Handler and collects the results.

Netgis Server: NETGIS Server is the common name of Netcad Enterprise Solutions. NETGIS Server Family includes many components/modules. These components provide data in OGC WPS, WMS, WFS, WFC, WMTS, KML standards. The solutions are database independent.

Netgis WPS Handler: WPS handler module, as a part of Netgis server is providing online data fusion capabilities.

Netcad NCC Proxy: NCC proxy application is an integration tool for desktop and server features of Netcad Suite.



3- Data Fusion Services on Netcad Architecture

Entry point of Data fusion Restful API is available at:

<http://foodie-vm5.man.poznan.pl/geoprocessing/wps>

Development process

Fusion processes is being developed based on web enabled Workflows and Netgis WPS Handler processes. Netcad Architect workflows and operators are being developed to provide capabilities below:

Index Calculations:

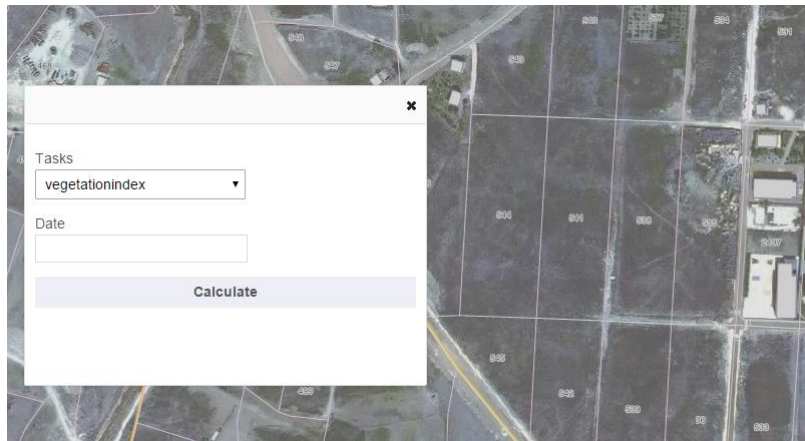
Vegetation, Water and Moisture Indexes are measurements that calculated from combinations of satellite imagery bands. These indices are calculated by using arithmetic operations between pixel intensity values of an image in a specific band and corresponding pixel intensity values in a second band.

Advanced Precision Farming Analyzes:

Advanced Precision Farming Analyzes are classification and decision support processes that based on logistic regression analysis and modified analytic hierarchy process (m-AHP). These techniques enables us to assign relative weights to the different criteria involved in making a decision on suitability of land mapping unit for a land-use.

Feature Level Fusion:

Feature level fusion approach includes combining data from different sources to provide more efficient representation of data. Different features from the source data will be extracted first in order to integrate them with information provided from the semantic layer produced in FOODIE project [5]. The integration will use some specific rules to create a geographic object for each data entry which are based on the annotation vocabulary in the semantic layer, features extracted and the original spatial information of data itself if any.



4- Index Calculations Gadget for Desktop

- Vegetation indexes

Indicators describing density and health of the vegetation.

- Normalized Difference Vegetation Index (NDVI)
<http://foodie-vm5.man.poznan.pl/geoprocessing/wps/ndvi>
- Enhanced Vegetation Index (EVI)
<http://foodie-vm5.man.poznan.pl/geoprocessing/wps/evi>

- Water indexes

Indicators describing vegetation liquid water

- Normalized Difference Water Index (NDWI)
<http://foodie-vm5.man.poznan.pl/geoprocessing/wps/ndwi>
- NDI7
<http://foodie-vm5.man.poznan.pl/geoprocessing/wps/ndi7>
- Shortwave Infrared Water Stress Index
<http://foodie-vm5.man.poznan.pl/geoprocessing/wps/siws>

- Moisture indexes

Determination of surface moisture level.

- Moisture Stress Index
<http://foodie-vm5.man.poznan.pl/geoprocessing/wps/msi>
- Global Vegetation Moisture Index
<http://foodie-vm5.man.poznan.pl/geoprocessing/wps/gvmi>

- Computation of Time Differences of NVDI
Difference calculation of remote sensor input.
- Contour Line Generator
Image Processing of remote sensor input.
- Crop-Land Suitability Analysis
Classification process of land to support a certain use
- Feature Level Fusion (Annotation Vocabulary Integration)
Integration of spatial data and semantic data on service level

References

References

-
- | | |
|----|---|
| 01 | http://www.opengeospatial.org/standards/wps |
| 02 | http://docs.opengeospatial.org/is/14-065/14-065.html |
| 03 | http://www.netcad.com/en/home |
| 04 | Campos A., et al: "Open and Lightweight APIs" D3.2.2 FOODIE Deliverable, February 2016 |
| 05 | Palma R, et al: "Semantic tagging and open data publication tools" D3.3.2 FOODIE Deliverable, February 2016 |